



GRUNIVERPAL S.r.l.
Via Provinciale Verzuolo, 2,
12026 PIASCO [CN] - Italy
Phone: +39 0175 79301
Fax: +39 0175 797948
web: www.gt-cranes.com

The technology
of the future.
Since 1954.



1954-2024



Lifting equipment. Since 1954.
CRANES FOR PLASTIC INJECTION MOULDING
MOBILE CRANES
CRANES FOR TYRE MOULDING



GT•CRANES QUALITY. CERTIFIED QUALITY.



GT•CRANES WORLDWIDE
OUR DISTRIBUTION NETWORK.



18000

CRANES
DELIVERED



7000

HAPPY
CUSTOMERS



750

REGISTERED
PATENTS



62

COVERED
COUNTRIES



70

YEARS OF
EXPERIENCE

GT•CRANES. THE BEST RANGE OF MOBILE CRANES AND LIFTING EQUIPMENT.

Plastic injection moulding

The proper solution for an absolute precise positioning of moulds with weight up to 100.000 Kg on injection plastic machines with clamping force from 50 ton up to 5.000 ton.

GB 500_TR STANDARD / GB 500_TR VERTICAL	4
GB 750_TR STANDARD / GB 750_TR VERTICAL	6
MINIDREL 20S_HG / MINIDREL 20S_STD	8
MINIDREL 20SL_HG / MINIDREL 20SL_STD	10
MINIDREL 20SL_AZR / MINIDREL 20SL_ARR	12
MINIDREL 25S_HG / MINIDREL 40S_HG	14
MINIDREL 50S_HG / MINIDREL 60S_HG	16
MINIDREL 75S_HG / MINIDREL 100S_HG / MINIDREL 120S_HG	18
TRANSIDREL 300B / 350B / 500B	20

Mobile cranes

The range of cranes with capacity up to 25.000 Kg that thanks to the compactness and versatility of movements confirm the superior quality of GT cranes products.

MINIDREL 30B_STD / MINIDREL 30B_CMP / MINIDREL 30B_ADW	22
MINIDREL 50B_VWR / MINIDREL 50B_R	24
MINIDREL 65B_VWR	26
MINIDREL 75B_TRS / MINIDREL 75B_R	28
MINIDREL 90B_R / MINIDREL 90B_MSR	30
MINIDREL 125B_TRS / MINIDREL 125B_R / MINIDREL 150B_R	32
MINIDREL 250B_TRS	34

Cranes for tyre moulding

The specific lifting devices for tyre industry developed for handling the moulds up to 10.000 Kg on vertical curing machine.

GB 300_TR STANDARD / GB 500_TR STANDARD	36
MINIDREL 40S_ARR / MINIDREL 60S_ARR	38
MINIDREL 75S_ARR / MINIDREL 100S_ARR	40
MINIDREL 50B_SRR / MINIDREL 50B_MSR	42

JT line

A cheap and reliable solution of mini-crane allowing any type of lifting, up to 600 Kg.

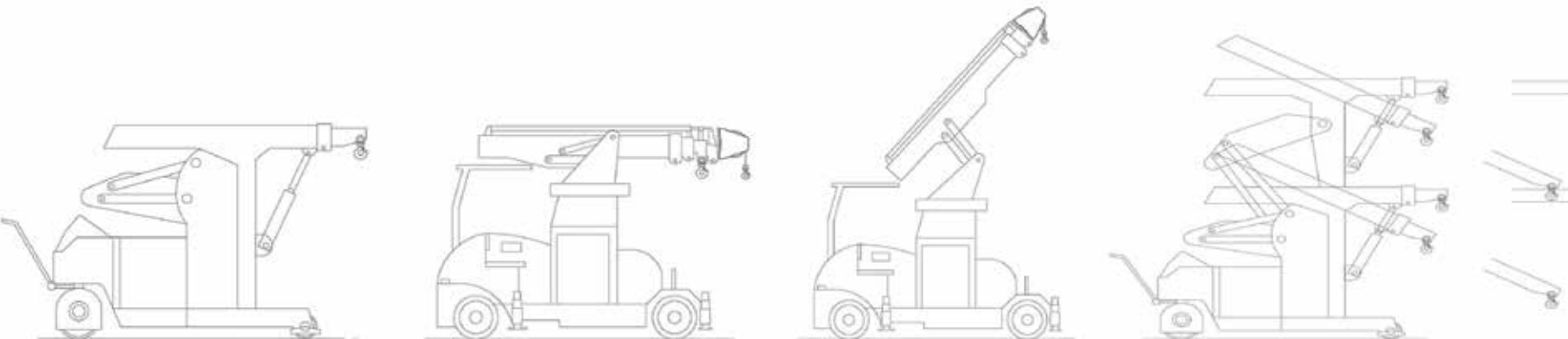
JT400 TR / JT450 TR / JT600	44
-----------------------------	----

Special lifting equipment

We can provide an unsurpassable level of technology for all kind of lifting request: customized mobile cranes, truck cranes, ATEX cranes, Ex cranes, compact cranes, lifting robots, aerial platforms, lifting platforms, special forklifts, forkltruck on demand, trolleys for MBT (main battle tanks), compact cranes for maintenance of helicopters.

Cranes optional

The range of optionals that reinforce the concept of "on demand" in GT cranes: remote controls, display, hydraulic jibs, battery quick change, hydraulic winches, sensors etc. Every detail is thought as a solution built on customer needs.

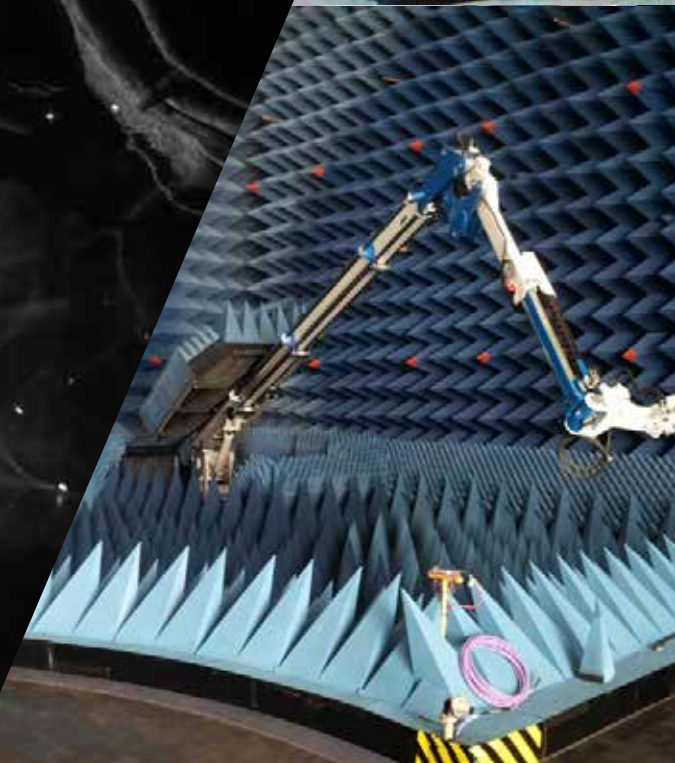


The protagonists are men, ideas and products.

Antonio and Jacques Tranchero established the company in 1954, specializing in the manufacture of electro-hydraulic lifting equipment for workshops and industrial applications. Gruniverpal becomes synonymous of exclusive made in Italy products that are capable of anticipating sector trends: all of this based on a project and product concept that is strictly on demand. The foundation for this is GT cranes' technology: every morning, those who work at GT cranes know that "the future begins today."

Lifting equipment. Since 1954.

The know-how developed over seventy successful years - with over 700 granted patents - serves as a symbol for the next generation of managers, engineers, and technicians striving for excellence.



GB500_TR Standard / Vertical

Suitable for injection machines with clamping force between **50** and **150 tons**.



	GB500_TR STANDARD	GB500_TR VERTICAL
Maximum load capacity	500 kg	500 kg
Standard min. hook's height from the ground	200 mm	950 mm
Standard max. hook's height from the ground	3.200 mm	2.200 mm
Possibility to extend height up to (option)	4.200 mm	-
Standard max. telescopic extension	1.960 mm	1.960 mm
Capacity at standard max. telescopic extension	280 kg	280 kg
Possibility to extend telecopic extension up to (option)	3.000 mm	3.000 mm
Capacity at max.telescopic extension (point 7)	180 kg	180 kg
Rotation (option)	60° - 150° - 270°	60° - 150° - 270°
Wheelbase	1.200 mm	1.200 mm
Dimensions - lenght	1.550 mm	1.550 mm
Dimensions - width	950 mm	950 mm
Dimensions - height	1.600 mm	1.600 mm
Adjustable speed from / to	From 0 to 40 m/min	From 0 to 40 m/min
Max. surmountable slope (unloaded)	8%	8%
Max. surmountable slope (loaded)	3%	3%
Front wheels	4 x Ø 160 x 60 mm	4 x Ø 160 x 60 mm
Wheels material	Polyurethane	Polyurethane
Drive	REAR WHEEL	REAR WHEEL
Total weight	1.250 Kg	1.350 Kg
Electric motor power	1,5 KW / 12 V.	1,5 KW / 12 V.
Hardened battery (standard)	200 Ah / 12 V	200 Ah / 12 V
Battery charger on board	110 / 240 V-50/60 Hz	110 / 240 V-50/60 Hz
Lead acid battery	-	-
Gel battery	•	•
Additional autonomy of battery	○	○
Proportional control on board of all mouvements	•	•
Certification to standard 2006/42 CE	•	•
Made in accordance (not certified) to standard UL508 A	•	•
Certification (issued by Third Party) to standard UL508 A	○	○
Drive hydraulic unit	•	•
Automatic braking system	•	•
Overloading safety system	•	•
Pressure safety valves on each movements	•	•



GB750_TR Standard / Vertical

Suitable for injection machines with clamping force between **50** and **200 tons**.



	GB750_TR STANDARD	GB750_TR VERTICAL
Maximum load capacity	750 kg	750 kg
Standard min. hook's height from the ground	200 mm	1.605 mm
Standard max. hook's height from the ground	3.200 mm	2.805 mm
Possibility to extend height up to (option)	4.200 mm	-
Standard max. telescopic extension	1.960 mm	1.960 mm
Capacity at standard max. telescopic extension	375 kg	375 kg
Possibility to extend telecopic extension up to (option)	3.000 mm	3.000 mm
Capacity at max.telescopic extension (point 7)	280 kg	280 kg
Rotation (option)	60° - 150°	60° - 150°
Wheelbase	1.200 mm	1.200 mm
Dimensions - lenght	1.650 mm	1.650 mm
Dimensions - width	1.200 mm	1.200 mm
Dimensions - height	1.600 mm	1.600 mm
Adjustable speed from / to	From 0 to 40 m/min	From 0 to 40 m/min
Max. surmountable slope (unloaded)	8%	8%
Max. surmountable slope (loaded)	3%	3%
Front wheels	4 x Ø 160 x 60 mm	4 x Ø 160 x 60 mm
Wheels material	Polyurethane	Polyurethane
Drive	REAR WHEEL	REAR WHEEL
Total weight	1.800 Kg	1.800 Kg
Electric motor power	2,0 KW / 12 V.	2,0 KW / 12 V.
Hardened battery (standard)	300 Ah / 12 V	300 Ah / 12 V
Battery charger on board	110 / 240 V-50/60 Hz	110 / 240 V-50/60 Hz
Lead acid battery	-	-
Gel battery	•	•
Additional autonomy of battery	○	○
Proportional control on board of all mouvements	•	•
Certification to standard 2006/42 CE	•	•
Made in accordance (not certified) to standard UL508 A	•	•
Certification (issued by Third Party) to standard UL508 A	○	○
Drive hydraulic unit	•	•
Automatic braking system	•	•
Overloading safety system	•	•
Pressure safety valves on each movements	•	•



Minidrel 20S_HG / STD

Suitable for injection machines with clamping force between **100** and **280 tons**.



	Minidrel 20S_HG	Minidrel 20S_STD
Maximum load capacity	2.000 kg	2.000 kg
Standard min. hook's height from the ground	1.800 mm	1.500 mm
Standard max. hook's height from the ground	3.600 mm	2.850 mm
Possibility to extend height up to (option)	-	-
Standard max. telescopic extension	1.500 mm	1.500 mm
Capacity at standard max. telescopic extension	700 kg	700 kg
Possibility to extend telecopic extension up to (option)	5.000 mm	5.000 mm
Capacity at max.telescopic extension (point 7)	160 kg	160 kg
Rear driving wheel	1 x Ø 450 x 110 mm	1 x Ø 450 x 110 mm
Wheelbase	1.250 mm	1.250 mm
Dimensions - lenght	1.610 mm	1.610 mm
Dimensions - width	950 mm	950 mm
Dimensions - height	2.320 mm	1.850 mm
Adjustable speed from / to	From 0 to 60 m/min	From 0 to 60 m/min
Max. surmountable slope (unloaded)	8%	8%
Max. surmountable slope (loaded)	3%	3%
Front wheels	2 x Ø 160 x 80 mm	2 x Ø 160 x 80 mm
Wheels material	Polyurethane	Polyurethane
Drive	REAR WHEEL	REAR WHEEL
Total weight	3.200 Kg	3.200 Kg
Electric motor power	3,0 KW / 24 cc.	3,0 KW / 24 cc.
Hardened battery (standard)	280 Ah / 12 V	280 Ah / 12 V
Battery charger on board	110 / 240 V-50/60 Hz	110 / 240 V-50/60 Hz
Lead acid battery	-	-
Gel battery	•	•
Additional autonomy of battery	○	○
Proportional control on board of all mouvements	•	•
Certification to standard 2006/42 CE	•	•
Made in accordance (not certified) to standard UL508 A	•	•
Certification (issued by Third Party) to standard UL508 A	○	○
Drive hydraulic unit	•	•
Automatic braking system	•	•
Overloading safety system	•	•
Pressure safety valves on each movements	•	•



Minidrel 20SL_HG / STD

Suitable for injection machines with clamping force between **100** and **320 tons**.



	Minidrel 20SL_HG	Minidrel 20SL_STD
Maximum load capacity	2.000 kg	2.000 kg
Standard min. hook's height from the ground	1.800 mm	1.500 mm
Standard max. hook's height from the ground	3.600 mm	2.850 mm
Possibility to extend height up to (option)	-	-
Standard max. telescopic extension	1.500 mm	1.500 mm
Capacity at standard max. telescopic extension	1.000 kg	1.000 kg
Possibility to extend telecopic extension up to (option)	5.000 mm	5.000 mm
Capacity at max.telescopic extension (point 7)	225 kg	225 kg
Rear driving wheel	1 x Ø 450 x 110 mm	1 x Ø 450 x 110 mm
Wheelbase	1.500 mm	1.500 mm
Dimensions - lenght	1.860 mm	1.860 mm
Dimensions - width	950 mm	950 mm
Dimensions - height	2.320 mm	1.850 mm
Adjustable speed from / to	From 0 to 60 m/min	From 0 to 60 m/min
Max. surmountable slope (unloaded)	8%	8%
Max. surmountable slope (loaded)	3%	3%
Front wheels	2 x Ø 160 x 80 mm	2 x Ø 160 x 80 mm
Wheels material	Polyurethane	Polyurethane
Drive	REAR WHEEL	REAR WHEEL
Total weight	3.600 Kg	3.600 Kg
Electric motor power	3,0 KW / 24 cc.	3,0 KW / 24 cc.
Hardened battery (standard)	360 Ah / 12 V	360 Ah / 12 V
Battery charger on board	110 / 240 V-50/60 Hz	110 / 240 V-50/60 Hz
Lead acid battery	-	-
Gel battery	•	•
Additional autonomy of battery	○	○
Proportional control on board of all mouvements	•	•
Certification to standard 2006/42 CE	•	•
Made in accordance (not certified) to standard UL508 A	•	•
Certification (issued by Third Party) to standard UL508 A	○	○
Drive hydraulic unit	•	•
Automatic braking system	•	•
Overloading safety system	•	•
Pressure safety valves on each movements	•	•



MINIDREL 20SL AZR / ARR

Suitable for injection machines with clamping force between **100** and **320 tons**.



	Minidrel 20SL AZR	Minidrel 20SL ARR
Maximum load capacity	2.000 kg	2.000 kg
Standard min. hook's height from the ground	350 mm	150 mm
Standard max. hook's height from the ground	3.700 mm	1.950 mm
Possibility to extend height up to (option)	-	-
Standard max. telescopic extension	2.500 mm	1.250 mm
Capacity at standard max. telescopic extension	625 kg	1.400kg
Possibility to extend teleopic extension up to (option)	-	-
Capacity at max.telescopic extension (point 7)	-	-
Rotation (option)	-	-
Wheelbase	1.500 mm	1.500 mm
Dimensions - lenght	1.860 mm	1.860 mm
Dimensions - width	950 mm	950 mm
Dimensions - height	2.200 mm	2.200 mm
Adjustable speed from / to	From 0 to 60 m/min	From 0 to 60 m/min
Max. surmountable slope (unloaded)	8%	8%
Max. surmountable slope (loaded)	3%	3%
Front wheels	4 x Ø 160 x 80 mm	2 x Ø 160 x 80 mm
Rear driving wheel	1 x Ø 450 x 110 mm	1 x Ø 450 x 110 mm
Wheels material	Polyurethane	Polyurethane
Drive	REAR WHEEL	REAR WHEEL
Total weight	3.600 Kg	3.600 kg
Electric motor power	3,0 KW / 24 cc.	3,0 KW / 24 cc.
Hardened battery (standard)	360 Ah / 24 V	360 Ah / 24 V
Battery charger on board	110 / 240 V-50/60 Hz	110 / 240 V-50/60 Hz
Lead acid battery	-	-
Gel battery	•	•
Additional autonomy of battery	○	○
Proportional control on board of all mouvements	•	•
Certification to standard 2006/42 CE	•	•
Made in accordance (not certified) to standard UL508 A	•	•
Certification (issued by Third Party) to standard UL508 A	○	○
Drive hydraulic unit	•	•
Automatic braking system	•	•
Pressure safety valves on each movements	•	•



Minidrel 25S_HG · 40S_HG

Suitable for injection machines with clamping force between **200** and **600 tons**.



	Minidrel 25S_HG	Minidrel 40S_HG
Maximum load capacity	2.500 kg	4.000 kg
Standard min. hook's height from the ground	2.400 mm	2.400 mm
Standard max. hook's height from the ground	4.800 mm	4.800 mm
Possibility to extend height up to (option)	5.000 mm	5.000 mm
Standard max. telescopic extension	1.350 mm	1.350 mm
Capacity at standard max. telescopic extension	2.500 kg	4.000 kg
Possibility to extend telecopic extension up to (option)	3.600 mm	3.600 mm
Capacity at max.telescopic extension (point 7)	900 kg	1.350 kg
Rear driving wheel	1 x Ø 450 x 110 mm	1 x Ø 450 x 180 mm
Wheelbase	1.810 mm	2.000 mm
Dimensions - lenght	2.240 mm	2.470 mm
Dimensions - width	1.410 mm	1.430 mm
Dimensions - height	2.750/2.850/2.950 mm	2.850/2.950/3.050 mm
Adjustable speed from / to	From 0 to 60 m/min	From 0 to 60 m/min
Max. surmountable slope (unloaded)	8%	8%
Max. surmountable slope (loaded)	3%	3%
Front wheels	2 x Ø300 x 140 mm	2 x Ø300 x 140 mm
Wheels material	Polyurethane	Polyurethane
Drive	REAR WHEEL	REAR WHEEL
Total weight	5.900 Kg	6.300 Kg
Electric motor power	4,0 KW / 24 cc.	5,0 KW / 24 cc.
Hardened battery (standard)	420 Ah / 24 V	420 Ah / 24 V
Battery charger on board	110 / 240 V-50/60 Hz	110 / 240 V-50/60 Hz
Lead acid battery	•	•
Gel battery	○	○
Additional autonomy of battery	○	○
Proportional control on board of all mouvements	•	•
Certification to standard 2006/42 CE	•	•
Made in accordance (not certified) to standard UL508 A	•	•
Certification (issued by Third Party) to standard UL508 A	○	○
Drive hydraulic unit	•	•
Automatic braking system	•	•
Overloading safety system	•	•
Pressure safety valves on each movements	•	•



Minidrel 50S_HG · 60S_HG

Suitable for injection machines with clamping force between **300** and **800 tons**.



	Minidrel 50S_HG	Minidrel 60S_HG
Maximum load capacity	5.000 kg	6.000 kg
Standard min. hook's height from the ground	2.400 mm	2.400 mm
Standard max. hook's height from the ground	4.800 mm	4.800 mm
Possibility to extend height up to (option)	5.000 mm	5.200 mm
Standard max. telescopic extension	1.350 mm	1.350 mm
Capacity at standard max. telescopic extension	5.000 kg	6.000 kg
Possibility to extend teleopic extension up to (option)	3.600 mm	3.600 mm
Capacity at max.telescopic extension (point 7)	1.700 kg	1.900 kg
Rear driving wheel	1 x Ø 450 x 180 mm	1 x Ø 450 x 180 mm
Wheelbase	2.250 mm	2.500 mm
Dimensions - lenght	2.720 mm	2.960 mm
Dimensions - width	1.430 mm	1.430 mm
Dimensions - height	2.850 / 2.950 / 3.050 mm	2.850/2.950/3.050/3.150 mm
Adjustable speed from / to	From 0 to 60 m/min	From 0 to 60 m/min
Max. surmountable slope (unloaded)	8%	8%
Max. surmountable slope (loaded)	3%	3%
Front wheels	2 x Ø300 x 140 mm	2 x Ø300 x 140 mm
Wheels material	Polyurethane	Polyurethane
Drive	REAR WHEEL	REAR WHEEL
Total weight	6.700 Kg	7.100 Kg
Electric motor power	5,0 KW / 24 cc.	5,0 KW / 24 cc.
Hardened battery (standard)	420 Ah / 24 V	420 Ah / 24 V
Battery charger on board	110 / 240 V-50/60 Hz	110 / 240 V-50/60 Hz
Lead acid battery	•	•
Gel battery	○	○
Additional autonomy of battery	○	○
Proportional control on board of all mouvements	•	•
Certification to standard 2006/42 CE	•	•
Made in accordance (not certified) to standard UL508 A	•	•
Certification (issued by Third Party) to standard UL508 A	○	○
Drive hydraulic unit	•	•
Automatic braking system	•	•
Overloading safety system	•	•
Pressure safety valves on each movements	•	•



Minidrel 75S_HG·100S_HG·120S_HG

Suitable for injection machines with clamping force between **400** and **1.000 tons**.



	Minidrel 75S_HG	100S_HG	120S_HG
Maximum load capacity	7.500 kg	10.000 kg	12.000 kg
Standard min. hook's height from the ground	2.600 mm	2.600 mm	2.600 mm
Standard max. hook's height from the ground	5.200 mm	5.200 mm	5.200 mm
Possibility to extend height up to (option)	-	-	-
Standard max. telescopic extension	1.350 mm	1.350 mm	1.350 mm
Capacity at standard max. telescopic extension	7.500 kg	10.000 kg	12.000 kg
Possibility to extend teleopic extension up to (option)	3.600 mm	3.600 mm	3.600 mm
Capacity at max.telescopic extension (point 7)	2.400 kg	3.300 kg	4.000 kg
Rear driving wheel	2 x Ø 450 x 110 mm	2 x Ø 450 x 110 - 180 - mm	
Wheelbase	2.620 mm	2.990 mm	3.500 mm
Dimensions - lenght	3.250 mm	3.595 mm	4.160 mm
Dimensions - width	1.490 mm	1.490 mm	1.490 mm
Dimensions - height	3.400 mm	3.400 mm	3.400 mm
Adjustable speed from / to	From 0 to 60 m/min	From 0 to 60 m/min	
Max. surmountable slope (unloaded)	8%	8%	8%
Max. surmountable slope (loaded)	3%	3%	3%
Front wheels	2 x Ø300 x 140 mm	2 x Ø300 x 140 - 180 mm	
Wheels material	Polyurethane	Polyurethane	
Drive	REAR WHEEL	REAR WHEEL	
Total weight	10.100 Kg	11.500 Kg	14.700 Kg
Electric motor power	8,0 KW / 48 cc.	8,0 - 12,0 KW / 48 cc.	
Hardened battery (standard)	560 Ah / 48V	560 Ah / 48V	
Battery charger on board	380 /440 V-50/60 Hz	380 /440 V-50/60 Hz	
Lead acid battery	•	•	•
Gel battery	○	○	○
Additional autonomy of battery	○	○	○
Proportional control on board of all mouvements	•	•	•
Certification to standard 2006/42 CE	•	•	•
Made in accordance (not certified) to standard UL508 A	•	•	•
Certification (issued by Third Party) to standard UL508 A	○	○	○
Drive hydraulic unit	•	•	•
Automatic braking system	•	•	•
Overloading safety system	•	•	•
Pressure safety valves on each movements	•	•	•

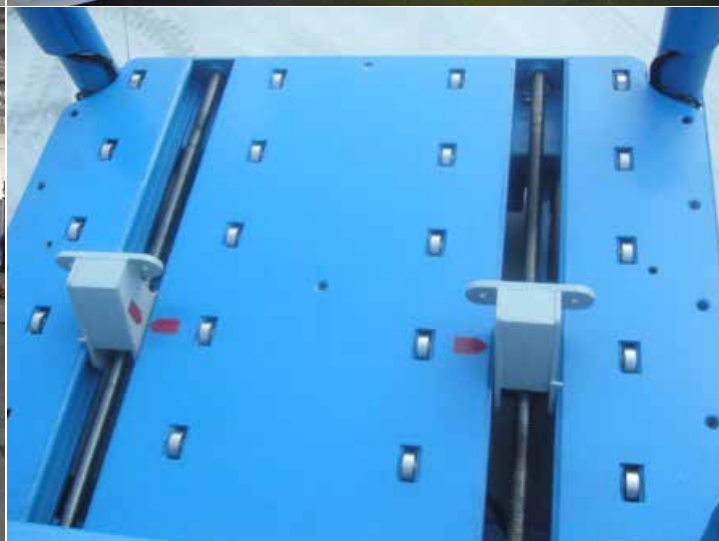


Transidrel 300B · 350B · 500B

Suitable for injection machines with clamping force between **1.000** and **4.000 tons**.



TRANSIDREL 300B/350B		TRANSIDREL 500B
Maximum load capacity	30.000 - 35.000 kg	50.000 kg
Standard min. hook's height from the ground	700 mm (table)	700 mm (table)
Standard max. hook's height from the ground	950 mm (table)	950 mm (table)
Possibility to extend height up to (option)	1.900 mm (table)	1.900 mm (table)
Capacity at standard max. telescopic extension	30.000 - 35.000 kg	50.000 kg
Wheelbase	1.905 mm - 2.100 mm	2.800 mm
Dimensions - lenght	2.792 mm - 3.050 mm	3.750 mm
Dimensions - width	2.410 mm	2.410 mm
Dimensions - height	2.180 mm	2.180 mm
Adjustable speed from / to	From 0 to 100 m/min	From 0 to 100 m/min
Max. surmountable slope (unloaded)	8%	8%
Max. surmountable slope (loaded)	3%	3%
Front wheels	4 x ø 600 x 200 mm	4 x ø 600 x 200 mm
Rear driving wheel	2 x ø 533 x 155 mm	2 x ø 533 x 155 mm
Wheels material	Cushion - Polyurethane	Polyurethane
Drive	TWO WHEELS	TWO WHEELS
Total weight	14.800 kg	16.800 kg
Electric motor power	660 Ah / 48V - 10,0 KW / 48 cc.	12,0 KW / 48 cc.
Hardened battery (standard)	900 Ah / 78V - 700 Ah / 48V	725 Ah / 48V
Battery charger on board	380 /440 V -50/60 Hz	380 /440 V -50/60 Hz
Lead acid battery	•	•
Additional autonomy of battery	○	○
Proportional control on board of all movements	•	•
Certification to standard 2006/42 CE	•	•
Made in accordance (not certified) to standard UL508 A	•	•
Certification (issued by Third Party) to standard UL508 A	○	○
Drive hydraulic unit	•	•
Automatic braking system	•	•
Overloading safety system	•	•
Pressure safety valves on each movements	•	•
Safety emergency electric devices	•	•
Winch (lifting capacity on demand)	○	○
Wireless remote control (capacity on demand)	○	○
User Manual and technical documentation	•	•



Minidrel 30B STD / CMP / ADW



Lifting capacity up to
3.000 kg.



Minidrel 30B STD			30B_CMP / ADW	
Maximum load capacity	3.000 kg		3.000 kg	
Standard min. hook's height from the ground	1.500 mm		1.000 mm	
Standard max. hook's height from the ground	5.500 mm		4.500 mm	
Possibility to extend height up to (option)	7.000 mm		5.500 mm	
Standard max. telescopic extension	1.500 mm		1.500 mm	
Capacity at standard max. telescopic extension	1.000 kg		1.000 kg	
Possibility to extend teleopic extension up to (option)	5.800 mm		5.800 mm	
Capacity at max.telescopic extension (point 7)	100 kg		100 kg	
Wheelbase	1.850 mm		1.850 mm	
Dimensions - lenght	2.180 mm		2.180 mm	
Dimensions - width	1.430 mm		970 mm	
Dimensions - height	2.370 mm		2.000 mm	
Adjustable speed from / to	From 0 to 60 m/min		From 0 to 60 m/min	
Max. surmountable slope (unloaded)	8%		8%	
Max. surmountable slope (loaded)	3%		3%	
Front wheels	2 x Ø 200 x 120 mm		2 x Ø 200 x 120 mm	
Wheels material	Polyurethane		Polyurethane	
Drive	REAR WHEEL		REAR WHEEL	
Total weight	1.900 Kg		1.900 Kg	
Electric motor power	3,0 KW / 24 cc.		3,0 KW / 24 cc.	
Hardened battery (standard)	420Ah / 24 V		420Ah / 24 V	
Battery charger on board	110 / 240 V-50/60 Hz		110 / 240 V-50/60 Hz	
Lead acid battery	•		•	
Gel battery	○		○	
Additional autonomy of battery	○		○	
Proportional control on board of all mouvements	•		•	
Certification to standard 2006/42 CE	•		•	
Made in accordance (not certified) to standard UL508 A	•		•	
Certification (issued by Third Party) to standard UL508 A	○		○	
Drive hydraulic unit	•		•	
Automatic braking system	•		•	
Overloading safety system	•		•	
Pressure safety valves on each movements	•		•	
Safety emergency electric devices	•		•	



Minidrel 50B_WVR / R

Lifting capacity up to
5.000 kg.



Minidrel 50B_WVR

Minidrel 50_R

Maximum load capacity	5.000 kg	5.000 kg
Standard min. hook's height from the ground	1.200 mm	1.200 mm
Standard max. hook's height from the ground	7.500 mm	7.500 mm
Possibility to extend height up to (option)	8.500 mm	8.500 mm
Standard max. telescopic extension	4.500 mm	4.500 mm
Capacity at standard max. telescopic extension	1.000 kg	1.000 kg
Possibility to extend telecopic extension up to (option)	5.600 mm	5.600 mm
Capacity at max.telescopic extension (point 7)	725 kg	725 kg
Wheelbase	1.960 mm	2.400 mm
Dimensions - lenght	2.660 mm	3.220 mm
Dimensions - width	1.350 mm	1.350 mm
Dimensions - height	2.520 mm / 2.980 mm	2.520 mm
Adjustable speed from / to	From 0 to 100 m/min	From 0 to 100 m/min
Max. surmountable slope (unloaded)	16%	16%
Max. surmountable slope (loaded)	8%	8%
Front wheels	2 x ø 533 x 178 mm	2 x ø 533 x 178 mm
Rear driving wheel	2 x ø 457x 152 mm	2 x ø 457x 152 mm
Wheels material	Cushion	Cushion
Drive	REAR WHEEL	REAR WHEEL
Total weight	7.400 Kg	6.200 Kg
Electric motor power	8,0 KW / 48 cc.	5,0 KW / 48V
Hardened battery (standard)	520 Ah / 48V	520 Ah / 48V
Battery charger on board	380 /440 V-50/60 Hz	380 /440 V-50/60 Hz
Lead acid battery	•	•
Gel battery	○	○
Additional autonomy of battery	○	○
Proportional control on board of all mouvements	•	•
Certification to standard 2006/42 CE	•	•
Made in accordance (not certified) to standard UL508 A	•	•
Certification (issued by Third Party) to standard UL508 A	○	○
Drive hydraulic unit	•	
Automatic braking system	•	•
Overloading safety system	•	
Pressure safety valves on each movements	•	•



Minidrel 65B_WVR

Lifting capacity up to
6.500 kg.



Minidrel 65B_WVR

Maximum load capacity	6.500 kg
Standard min. hook's height from the ground	1.200 mm
Standard max. hook's height from the ground	7.500 mm
Possibility to extend height up to (option)	8.500 mm
Standard max. telescopic extension	4.700 mm
Capacity at standard max. telescopic extension	1.150 kg
Possibility to extend teleopic extension up to (option)	5.600 mm
Capacity at max.telescopic extension (point 7)	950 kg
Wheelbase	2.530 mm
Dimensions - lenght	2.660 mm
Dimensions - width	3.300 mm
Dimensions - height	2.520 mm / 2.920 mm
Adjustable speed from / to	From 0 to 100 m/min
Max. surmountable slope (unloaded)	16%
Max. surmountable slope (loaded)	8%
Front wheels	2 x ø 533 x 178 mm
Rear driving wheel	2 x ø 457x 152 mm
Wheels material	Cushion / Polyurethane
Drive	REAR WHEEL
Total weight	7.200 Kg
Electric motor power	8,0 KW / 48 cc.
Hardened battery (standard)	600 Ah / 48V
Battery charger on board	380 /440 V-50/60 Hz
Lead acid battery	•
Gel battery	○
Additional autonomy of battery	○
Proportional control on board of all mouvements	•
Certification to standard 2006/42 CE	•
Made in accordance (not certified) to standard UL508 A	•
Certification (issued by Third Party) to standard UL508 A	○
Drive hydraulic unit	•
Automatic braking system	•
Overloading safety system	•
Pressure safety valves on each movements	•



Minidrel 75B_TRS / R

Lifting capacity up to
7.500 kg.



Minidrel 75B_TRS

Minidrel 75B_R

Maximum load capacity	7.500 kg	7.500 kg
Standard min. hook's height from the ground	1.200 mm	1.200 mm
Standard max. hook's height from the ground	7.500 mm	7.500 mm
Possibility to extend height up to (option)	8.500 mm	8.500 mm
Standard max. telescopic extension	4.500 mm	4.500 mm
Capacity at standard max. telescopic extension	1.500 kg	1.500 kg
Possibility to extend telescopic extension up to (option)	7.300 mm	5.500 mm
Capacity at max.telescopic extension (point 7)	1.000 kg	1.000 kg
Rotation (option)	190°	-
Wheelbase	2.500 mm	2.750 mm
Dimensions - lenght	3.450 mm	3.650 mm
Dimensions - width	1.750 mm	1.350 mm
Dimensions - height	2.700 mm	2.650 mm
Adjustable speed from / to	From 0 to 100 m/min	From 0 to 100 m/min
Max. surmountable slope (unloaded)	16%	16%
Max. surmountable slope (loaded)	8%	8%
Front wheels	2 x ø 533 x 230 mm	2 x ø 533 x 230 mm
Rear driving wheel	2 x ø 457 x 180 mm	2 x ø 457 x 180 mm
Wheels material	Cushion	Cushion
Drive	REAR WHEEL	REAR WHEEL
Total weight	8.300 Kg	6.900 Kg
Electric motor power	8,0 KW / 48 cc.	5,0 KW / 48V
Hardened battery (standard)	560 Ah / 48V	560 Ah / 48V
Battery charger on board	380 /440 V-50/60 Hz	380 /440 V-50/60 Hz
Lead acid battery	•	•
Gel battery	○	○
Additional autonomy of battery	○	○
Proportional control on board of all mouvements	•	•
Certification to standard 2006/42 CE	•	•
Made in accordance (not certified) to standard UL508 A	•	•
Certification (issued by Third Party) to standard UL508 A	○	○
Drive hydraulic unit	•	•
Automatic braking system	•	•
Overloading safety system	•	•



Minidrel 90B_R / MSR

Lifting capacity up to **9.000 kg.**



Minidrel 90B_R Minidrel 90B_MSR

Maximum load capacity	9.000 kg	9.000 kg
Standard min. hook's height from the ground	1.200 mm	100 mm
Standard max. hook's height from the ground	7.500 mm	5.800 mm
Possibility to extend height up to (option)	8.500 mm	-
Standard max. telescopic extension	4.500 mm	4.900 mm
Capacity at standard max. telescopic extension	2.100 kg	1.900 kg
Possibility to extend telecopic extension up to (option)	5.500 mm	-
Capacity at max.telescopic extension (point 7)	1.300 kg	-
Wheelbase	2.900 mm	2.900 mm
Dimensions - lenght	3.810 mm	3.810 mm
Dimensions - width	1.500 mm	1.350 mm / 1.500 mm
Dimensions - height	2.520 mm / 2.650 mm	2.650 mm
Adjustable speed from / to	From 0 to 100 m/min	From 0 to 100 m/min
Max. surmountable slope (unloaded)	16%	16%
Max. surmountable slope (loaded)	8%	8%
Front wheels	2 x ø 533 x 230 mm	2 x ø 533 x 230 mm
Rear driving wheel	2 x ø 533 x 178 mm	2 x ø 533 x 178 mm
Wheels material	Cushion	Cushion
Drive	FOUR WHEELS	FOUR WHEELS
Total weight	9.700 Kg	9.700 Kg
Electric motor power	10,0 KW / 48 cc.	10,0 KW / 48 cc.
Hardened battery (standard)	660 Ah / 48V	660 Ah / 48V
Battery charger on board	380 /440 V-50/60 Hz	380 /440 V-50/60 Hz
Lead acid battery	•	•
Gel battery	○	○
Additional autonomy of battery	○	○
Proportional control on board of all mouvements	•	•
Certification to standard 2006/42 CE	•	•
Made in accordance (not certified) to standard UL508 A	•	•
Certification (issued by Third Party) to standard UL508 A	○	○
Drive hydraulic unit	•	•
Automatic braking system	•	•
Overloading safety system	•	•
Pressure safety valves on each movements	•	•



Minidrel 125B_TRS / R · 150B_R

Lifting capacity up to
15.000 kg.



Minidrel 125B_TRS / R		Minidrel 150B_R
Maximum load capacity	12.500 kg	15.000 kg
Standard min. hook's height from the ground	1.200 mm	1.200 mm
Standard max. hook's height from the ground	7.500 mm	7.500 mm
Possibility to extend height up to (option)	8.500 mm	8.500 mm
Standard max. telescopic extension	4.500 mm	4.500 mm
Capacity at standard max. telescopic extension	2.500 kg	3.000 kg
Possibility to extend teleopic extension up to (option)	5.500 mm	5.500 mm
Capacity at max.telescopic extension (point 7)	1.750 kg	2.100 kg
Rotation (option)	210° / -	-
Wheelbase	2.500 mm / 3.000 mm	3.250 mm
Dimensions - lenght	3.615 mm / 3.920 mm	4.250 mm
Dimensions - width	2.050 mm / 1.850 mm	1.850 mm
Dimensions - height	2.650 mm	2.650 mm
Adjustable speed from / to	From 0 to 100 m/min	From 0 to 100 m/min
Max. surmountable slope (unloaded)	16%	16%
Max. surmountable slope (loaded)	8%	8%
Front wheels	2 x ø711 x 356 mm	2 x ø711 x 356 mm
Rear driving wheel	2 x ø533 x 178 mm	2 x ø533 x 178 mm
Wheels material	Cushion	Cushion
Drive	FOUR WHEELS	FOUR WHEELS
Total weight	13.600 Kg / 12.800 kg	14.600Kg
Electric motor power	12,0 KW / 78 cc.	16,0 KW / 78 cc.
Hardened battery (standard)	725 Ah / 78V	725 Ah / 78V
Battery charger on board	380 /440 V-50/60 Hz	380 /440 V-50/60 Hz
Lead acid battery	•	•
Gel battery	○	○
Additional autonomy of battery	○	○
Proportional control on board of all mouvements	•	•
Certification to standard 2006/42 CE	•	•
Made in accordance (not certified) to standard UL508 A	•	•
Certification (issued by Third Party) to standard UL508 A	○	○
Drive hydraulic unit	•	•
Automatic braking system	•	•
Overloading safety system	•	•



Minidrel 250B_TRS

Lifting capacity up to
25.000 kg.



Minidrel 250B_TRS

Maximum load capacity	25.000 kg
Standard min. hook's height from the ground	1.200 mm
Standard max. hook's height from the ground	8.500 mm
Possibility to extend height up to (option)	10.500 mm
Standard max. telescopic extension	5.500 mm
Capacity at standard max. telescopic extension	5.400 kg
Possibility to extend telescopic extension up to (option)	7.200 mm
Capacity at max.telescopic extension (point 7)	3.600 kg
Rotation (option)	210°
Wheelbase	3.250 mm
Dimensions - lenght	4.550 mm
Dimensions - width	2.300 mm
Dimensions - height	2.890 mm
Adjustable speed from / to	From 0 to 100 m/min
Max. surmountable slope (unloaded)	16%
Max. surmountable slope (loaded)	8%
Front wheels	24 x ø711 x 305 mm
Rear driving wheel	2 x ø 457x 152 mm
Wheels material	Cushion
Drive	SIX WHEELS
Total weight	24.400 Kg
Electric motor power	24,0 KW / 78 cc.
Hardened battery (standard)	900 Ah / 78V
Battery charger on board	380 / 440 V-50/60 Hz
Lead acid battery	•
Gel battery	○
Additional autonomy of battery	○
Proportional control on board of all mouvements	•
Certification to standard 2006/42 CE	•
Made in accordance (not certified) to standard UL508 A	•
Certification (issued by Third Party) to standard UL508 A	○
Drive hydraulic unit	•
Automatic braking system	•
Overloading safety system	•



GB 300_TR / 500_TR STANDARD



Lifting capacity up to **500 kg.**



	GB 300_TR standard	GB 500_TR standard
Maximum load capacity	300 kg	500 kg
Standard min. hook's height from the ground	200 mm	200 mm
Standard max. hook's height from the ground	3.200 mm	3.200 mm
Possibility to extend height up to (option)	-	4.200 mm
Standard max. telescopic extension	1.960 mm	1.960 mm
Capacity at standard max. telescopic extension	180 kg	280 kg
Possibility to extend teleopic extension up to (option)	-	3.000 mm
Capacity at max.telescopic extension (point 7)	-	180 kg
Rotation (option)	150°	60° - 150° - 270°
Wheelbase	1.000 mm	1.200 mm
Dimensions - lenght	1.400 mm	1.550 mm
Dimensions - width	850 mm	950 mm
Dimensions - height	1.600 mm	1.600 mm
Adjustable speed from / to	From 0 to 40 m/min	From 0 to 40 m/min
Max. surmountable slope (unloaded)	8%	8%
Max. surmountable slope (loaded)	3%	3%
Front wheels	4 x Ø 160 x 60 mm	4 x Ø 160 x 60 mm
Rear driving wheel	1 x Ø 160 x 80 mm	1 x Ø 160 x 80 mm
Wheels material	Polyurethane	Polyurethane
Drive	REAR WHEEL	REAR WHEEL
Total weight	950 Kg	1.250 Kg
Electric motor power	1,5 KW / 12 V.	1,5 KW / 12 V.
Hardened battery (standard)	200 Ah / 12 V	200 Ah / 12 V
Battery charger on board	110 / 240 V-50/60 Hz	110 / 240 V-50/60 Hz
Lead acid battery	-	-
Gel battery	•	•
Additional autonomy of battery	○	○
Proportional control on board of all mouvements	•	•
Certification to standard 2006/42 CE	•	•
Made in accordance (not certified) to standard UL508 A	•	•
Certification (issued by Third Party) to standard UL508 A	○	○
Drive hydraulic unit	•	•
Automatic braking system	•	•
Overloading safety system	•	•



Minidrel 40S_ARR / 60S ARR

Lifting capacity up to **6.000 kg.**



	Minidrel 40S_ARR	Minidrel 60S_ARR
Maximum load capacity	4.000 kg	6.000 kg
Standard min. hook's height from the ground	100 mm	100 mm
Standard max. hook's height from the ground	3.600 mm	3.600 mm
Possibility to extend height up to (option)	-	-
Standard max. telescopic extension	1.350 mm	1.350 mm
Capacity at standard max. telescopic extension	4.000 kg	6.000 kg
Possibility to extend telecopic extension up to (option)	2.470 mm	2.470 mm
Capacity at max.telescopic extension (point 7)	2.000 kg	3.000 kg
Rotation (option)	-	-
Wheelbase	2.000 mm	2.570 mm
Dimensions - lenght	2.470 mm	2.960 mm
Dimensions - width	1.430 mm	1.430 mm
Dimensions - height	2.200 mm	2.200 mm
Adjustable speed from / to	From 0 to 60 m/min	From 0 to 60 m/min
Max. surmountable slope (unloaded)	8%	8%
Max. surmountable slope (loaded)	3%	3%
Front wheels	2 x Ø300 x 140 mm	2 x Ø300 x 140 mm
Rear driving wheel	1 x Ø 450 x 180 mm	1 x Ø 450 x 180 mm
Wheels material	Polyurethane	Polyurethane
Drive	REAR WHEEL	REAR WHEEL
Total weight	6.500 Kg	7.300 Kg
Electric motor power	5,0 KW / 24 cc.	5,0 KW / 24 cc.
Hardened battery (standard)	420 Ah / 24 V	420 Ah / 24 V
Battery charger on board	110 / 240 V-50/60 Hz	110 / 240 V-50/60 Hz
Lead acid battery	•	•
Gel battery	○	○
Additional autonomy of battery	○	○
Proportional control on board of all mouvements	•	•
Certification to standard 2006/42 CE	•	•
Made in accordance (not certified) to standard UL508 A	•	•
Certification (issued by Third Party) to standard UL508 A	○	○
Drive hydraulic unit	•	•
Automatic braking system	•	•
Overloading safety system	•	•



Minidrel 75S_ARR / 100S ARR

Lifting capacity up to
10.000 kg.



	Minidrel 75S_ARR	Minidrel 100S_ARR
Maximum load capacity	7.500 kg	10.000 kg
Standard min. hook's height from the ground	100 mm	100 mm
Standard max. hook's height from the ground	3.600 mm	3.600 mm
Possibility to extend height up to (option)	-	-
Standard max. telescopic extension	1.350 mm	1.350 mm
Capacity at standard max. telescopic extension	7.500 kg	10.000 kg
Possibility to extend telecopic extension up to (option)	3.100 mm	3.500 mm
Capacity at max.telescopic extension (point 7)	3.200 kg	3.700 kg
Rotation (option)	-	-
Wheelbase	2.620 mm	2.920 mm
Dimensions - lenght	3.250 mm	3.550 mm
Dimensions - width	1.490 mm	1.490 mm
Dimensions - height	2.200 mm	2.200 mm
Adjustable speed from / to	From 0 to 60 m/min	From 0 to 60 m/min
Max. surmountable slope (unloaded)	8%	8%
Max. surmountable slope (loaded)	3%	3%
Front wheels	4 x Ø300 x 140 mm	4 x Ø300 x 140 mm
Rear driving wheel	2 x Ø 450 x 110 mm	2 x Ø 450 x 110 mm
Wheels material	Polyurethane	Polyurethane
Drive	REAR WHEEL	REAR WHEEL
Total weight	10.300 Kg	11.800 Kg
Electric motor power	8,0 KW / 48 cc.	8,0 KW / 48 cc.
Hardened battery (standard)	560 Ah / 48V	560 Ah / 48V
Battery charger on board	380 / 440 V-50/60 Hz	380 / 440 V-50/60 Hz
Lead acid battery	●	●
Gel battery	○	○
Additional autonomy of battery	○	○
Proportional control on board of all mouvements	●	●
Certification to standard 2006/42 CE	●	●
Made in accordance (not certified) to standard UL508 A	●	●
Certification (issued by Third Party) to standard UL508 A	○	○
Drive hydraulic unit	●	●
Automatic braking system	●	●
Overloading safety system	●	●



Minidrel 50B_SRR / _MSR

Lifting capacity up to **5.000 kg.**



	Minidrel 50B_SRR	Minidrel 50B_MSR
Maximum load capacity	5.000 kg	5.000 kg
Standard min. hook's height from the ground	1.200 mm	450 mm
Standard max. hook's height from the ground	7.500 mm	5.200 mm
Possibility to extend height up to (option)	8.500 mm	-
Standard max. telescopic extension	4.500 mm	3.200 mm
Capacity at standard max. telescopic extension	1.000 kg	1.500 kg
Possibility to extend teleopic extension up to (option)	5.500 mm	4.200 mm
Capacity at max.telescopic extension (point 7)	600 kg	900 kg
Rotation (option)	-	-
Wheelbase	2.180 mm	2.300 mm
Dimensions - lenght	3.060 mm	3.145 mm
Dimensions - width	1.350 mm	1.350 mm
Dimensions - height	2.520 mm / 2.650 mm	2.660 mm
Adjustable speed from / to	From 0 to 1000 m/min	From 0 to 100 m/min
Max. surmountable slope (unloaded)	16%	8%
Max. surmountable slope (loaded)	8%	3%
Front wheels	2 x ø 533 x 178 mm	2 x ø 533 x 178 mm
Rear driving wheel	2 x ø 457x 152 mm	2 x ø 457x 152 mm
Wheels material	Cushion	Cushion
Drive	FOUR WHEELS	FOUR WHEELS
Total weight	5.700 Kg	6.400 Kg
Electric motor power	5,0 KW / 48 cc.	5,0 KW / 48 cc.
Hardened battery (standard)	460 Ah / 48V	460 Ah / 48V
Battery charger on board	380 /440 V -50/60 Hz	380 /440 V-50/60 Hz
Lead acid battery	•	•
Gel battery	○	○
Additional autonomy of battery	○	○
Proportional control on board of all mouvements	•	•
Certification to standard 2006/42 CE	•	•
Made in accordance (not certified) to standard UL508 A	•	•
Certification (issued by Third Party) to standard UL508 A	○	○
Drive hydraulic unit	•	•
Automatic braking system	•	•
Overloading safety system	•	•



JT 400 TR / 450 TR / 600

Lifting capacity up to **600 kg.**



Counter balanced shop crane.
12 months warranty on all components.
With double action hydraulic pump, fast and easy.
Allows to work close to a machine.
Unique operate handle, brake design, mobile and foldable.



JT400 TR



JT450 TR



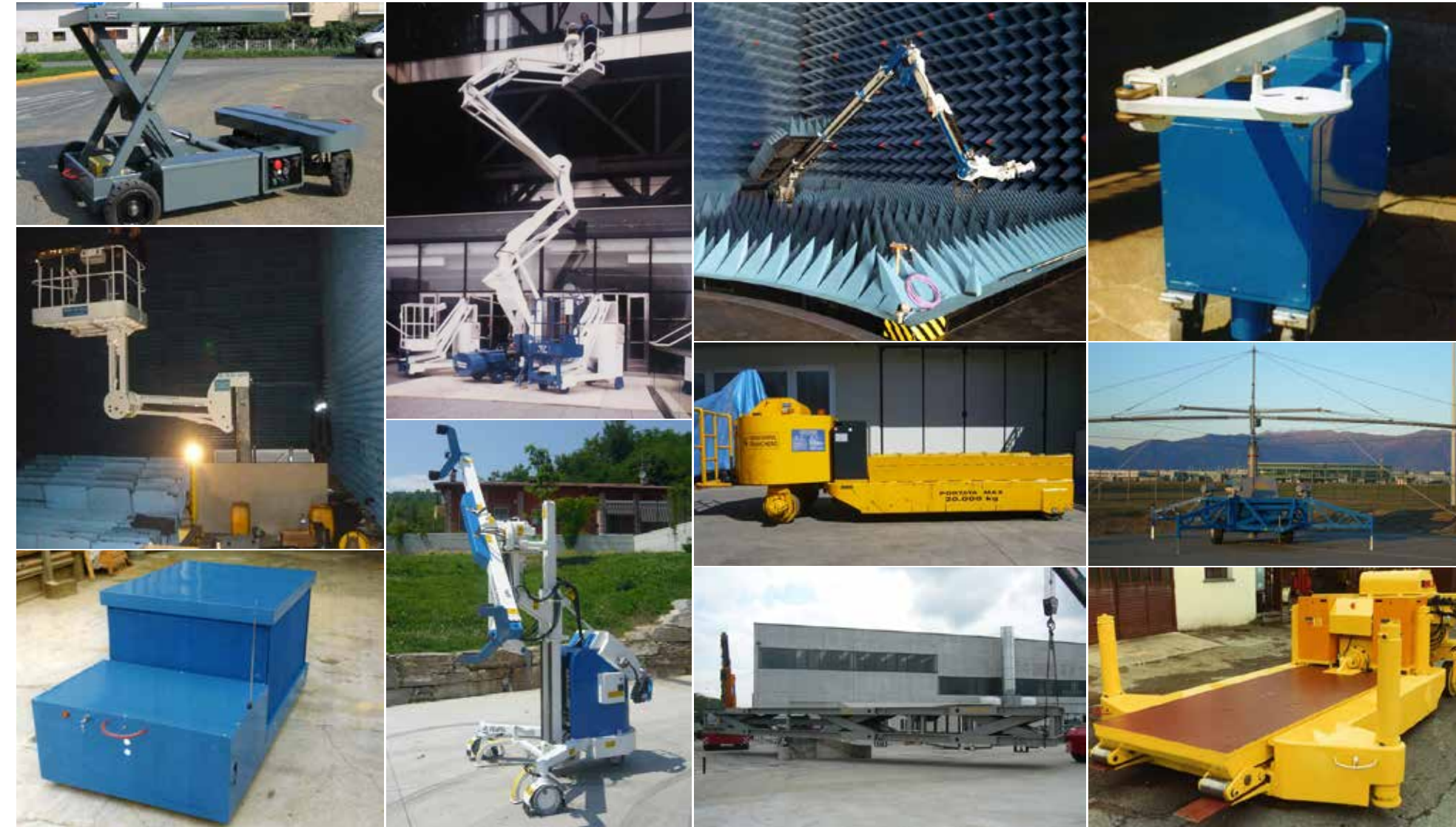
JT600

Maximum load capacity	400 kg	450 kg	600 kg
Standard min. hook's height from the ground	2.840 mm	2.840 mm	2.560 mm
Standard max. hook's height from the ground	2.005 mm	2.005 mm	1.520 mm
Capacity at standard max. telescopic extension	150 kg	120 kg	200 kg
Drive	Manual	Electric	Manual
Lifting	Electric	Electric	Electric
Telescoping	Manual	Electric	Manual
Rotation 330°	Manual	Electric	-
Dimensions - lenght	1.400 mm	1.310 mm	1.618 mm
Dimensions - width	985 mm	1.010 mm	910 mm
Dimensions - height	1.780 mm	1.845 mm	1.730 mm
Max. surmountable slope (unloaded)	5%	5%	5%
Max. surmountable slope (loaded)	3%	3%	3%
Front wheels	2 x Ø 200 mm	2 x Ø 180 mm	2 x Ø 200 mm
Rear driving wheel	2 x Ø 200 mm	1 x Ø 250 mm + 2 x Ø 60 mm	2 x Ø 200 mm
Wheels material	Polyurethane	Polyurethane	Polyurethane
Total weight	660 Kg	1.200 kg	590 kg
Electric motor power	0,8 KW / 12 V	2,2 KW / 24 V + 0,7 KW / 24 V	0,8 KW / 12 V
Hardened battery (standard)	80Ah / 12 V	80Ah / 24 V	80Ah / 12 V
Battery charger on board	110/240 V-50/60 Hz	110/240 V-50/60 Hz	110/240 V-50/60 Hz
Gel battery		•	•
Proportional control on board of all mouvements		•	•
Certification to standard 2006/42 CE		•	•
Drive hydraulic unit	-	•	-
Automatic braking system	-	•	-
Overloading safety system	-	•	-
Pressure safety valves on each movements		•	•
Safety emergency electric devices		•	•
Winch (lifting capacity on demand)	-	•	-
Possibility to do all movements with max. Load		•	•



Special lifting equipment

Maximum load capacity 100.000 kg.



Cranes optional

Optional for mobile cranes and lifting equipment.





GT cranes
customers.
Closer
than ever.

